



**Lighter
Stronger
Better!**

**Strongest Built
Australian Made
Lifetime Warranty**

NBMB61SY



**Fitting Guide &
Owners Manual
MERCEDES SPRINTER
11/2018 on**

76mm Nudge Bar
VEHICLE FRONTAL PROTECTION SYSTEM (VFPS)
FOR AIR BAG & ADR COMPLIANT VEHICLES

Index

Pages 3-5

ECB's Benefits
Product Care

Pages 6-7

Stage 1 - Vehicle Testing and Preparation
Stage 2 - Remove grille
Stage 3 - Remove bumper
Stage 4 to 5 - Steel mounting bracket installation
Stage 6 - Air vent trim

Pages 8-9

Stage 7 - Parking sensor wiring
Stage 8 - Refit bumper
Stage 9 - Parking sensor and grille installation
Stage 10 - Protection bar installation
Stage 11 - Electronics test and adjustment

Pages 10-11

Final Checks & Installation Kit
Finished Product

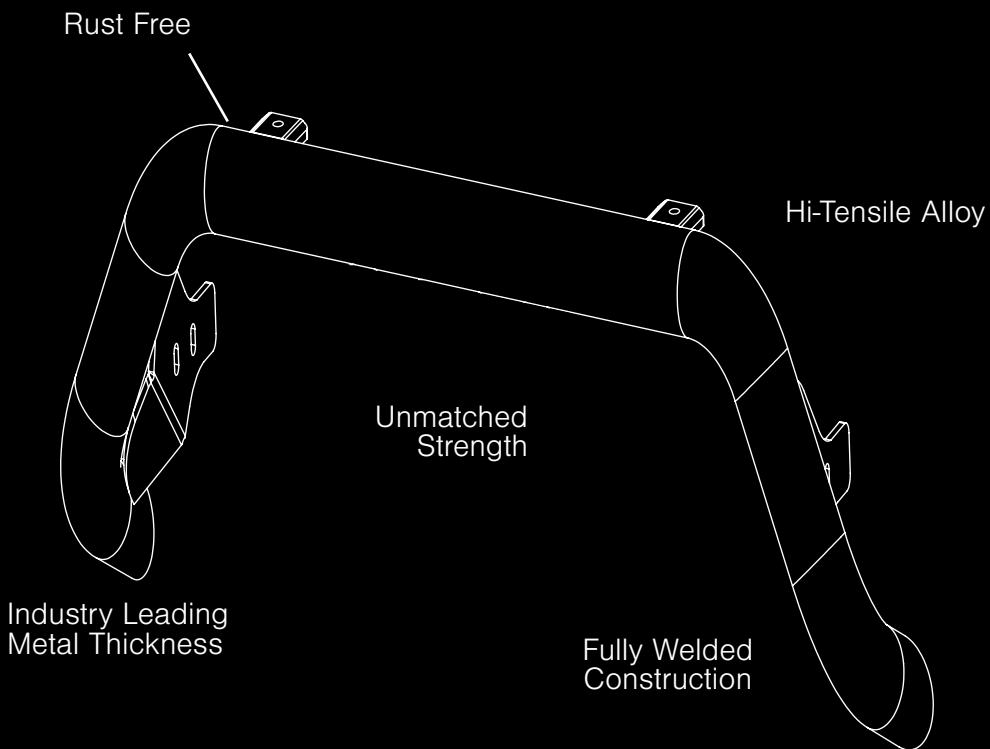
Pages 12-13

Warranty Registration

Pages 14-15

Notes

The Features of ECB



ECB's Benefits

Built to Perform - Not to a Price

ECB are proud to claim that their channels are not jigsaw puzzles that are bolted together, or even multiple sections welded together. Where any welding is required, it is done to the highest standards by qualified welders, not machines.

Anti-Corrosive Nature of Alloy

The composition of ECB's alloy has a very high resistance to corrosion. Rust not only looks unappealing but greatly reduces the strength of the metal. Rust can and will weaken the structural integrity of a steel bullbar effectively rendering it useless over time.

Australian Made

Established in 1971, we utilise over 46 years of experience designing, engineering and building products in Australia to suit Australian conditions. We can ensure the best quality controls and help support the local economy and employ over 90 proud Australians.

Weight Saving Benefits

An ECB alloy bullbar is typically half the weight of a steel bullbar. Unnecessary suspension upgrades are not required. The reduced weight also contributes to increased fuel economy and less wear and tear on tyres, suspension and braking components.

Welds That Work

ECB uses only the strongest welds and welding techniques to ensure every product is as structurally sound as possible. MIG (Metal Inert Gas) welding techniques are employed ensuring the welds are as thick as the thickest section of alloy's being joined together.

Lifetime Warranty

ECB provide a lifetime warranty and consumer guarantee on all of our manufactured products. This guarantee highlights the confidence in our ability and provides complete peace of mind for your purchase for the lifetime you own your vehicle.

Product Care

Polished Products

Being a premium mirror polished finish, regular maintenance will be required to keep that iconic ECB shine. We recommend using our own brand of Aluminium Polish, This formula has been tried and tested and in our opinion is the world's best standard.

Directions: Apply a small quantity of Aluminium Polish to a clean soft cloth and rub the metal surface. The longer the rubbing the brighter the surface becomes. Wipe off Aluminium Polish with clean soft cloth. Also suitable for motorised buffing machines.

Note: There are more specific details on the polish bottle. Please read before use.

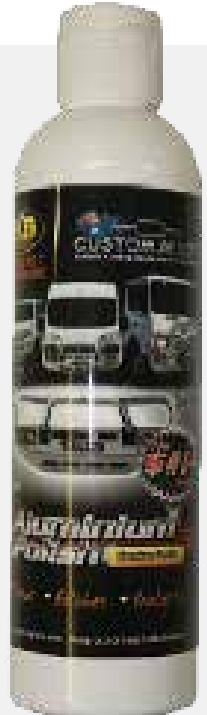
Powdercoated Products

Our powdercoated finishes are very low maintenance. Infact there is actually very little you will ever need to do for this product. Just clean it as you would your car and it will stay looking good as new.

ECB Aluminium Polish

When you're looking for that showroom finish look for your polished automotive products, you can depend on the no compromise quality of East Coast Bullbars Aluminium Polish. This specifically designed product is the best polish available and we guarantee that this \$#!+ works. With over 40 years of manufacturing polished alloy products we have trialed a large range of different polishes on the market and believe without a doubt that nothing beats the finish quality of East Coast Bullbars Aluminium Polish.

East Coast Bullbars Aluminium Polish is excellent for use by hand and is ideal for polished bullbars, nudge bar and stainless steel products. This polish will clean, polish and protect your product from the elements whilst bringing your products back to that showroom finish look.



76mm Nudge Bar

Stage 1

- Test drive vehicle to ensure all driver assists are correctly working and to gauge effectiveness. Park on a flat level surface.
- Take particular note of camera alignment and wheel placement markings as camera is moved and will need to be realigned.
- Apply parking brake and lift bonnet.
- Unwrap ECB Protection bar and disconnect mounts. Discard bolts.
- Ensure these instructions are left with the vehicle owner and/or operator.



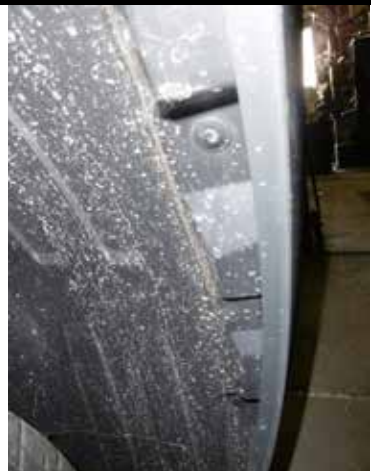
Stage 2

- Remove three (3) T25 Torx screws and four (4) push-pull clips from top of grille. Remove grille by pushing down on four (4) lower clips and gently pulling forward.
- From step remove two (2) T45 torx screws.



Stage 3

- Remove five (5) plastic push pull clips (per side) from side wing and wheel arch of vehicle. Gently remove wheel arch and splash guards from behind sides of bumper.
- Reach in behind bumper disconnect parking sensors on left hand side and camera in middle of bumper. Carefully remove bumper.



Mercedes Sprinter 11/18on

Stage4

- Remove four (4) 13 mm head bolts (per side) from front of bumper support and remove bumper support.



Stage5

- Refit bumper support over ECB steel mounting brackets using four (4) M8 x 1.25 x 30mm bolts, spring washers and flat washers (each side) (supplied) into captive nuts. **FINGER TIGHTEN ONLY.**
- Using ECB protection bar inside to inside measurement , and the outside to outside on steel mounting brackets , align steel mounts centrally on vehicle . **TIGHTEN ALL BOLTS**



Stage 6

- Trim outer vent of air vent and trim 15mm of lower inner grille to fit around steel mounting brackets.
- Remove camera from bumper. Remove inner support brackets by pressing sides in with small screw driver and remove camera for fitment into protection bar.



76mm Nudge Bar

Stage 7

- Remove two (2) centre parking sensors from bumper.
- Extend wiring using 150 mm long single core wire and solder joiners (supplied).
- Place 10mm convoluted tubing (supplied) on wiring to protect from damage.



Stage 8

- Disconnect camera wiring from the camera bracket. Redirect camera harness through grille upon refitment so can be connected to camera on protection bar .
- Refit bumper and grille assembly as per steps 2 to 3 .



Stage 9

- Fit centre parking sensors into ECB parking sensor mounts on protection bar .
- Place camera in protection bar then secure using rear mounting bracket (supplied) with two (2) M6 x 16 bolts, flat washers and nyloc nuts (supplied).
- **Finger Tighten** nyloc nuts enough so adjustment can be made after fitment of protection bar .



Mercedes Sprinter 11/18on

Stage 10

- Fit ECB protection bar to steel mounting brackets using four (4) M10 x 1.5 x 40mm bolts, flat washers, spring washers and nuts (supplied).
- Align protection bar with vehicle .
TIGHTEN ALL BOLTS



Stage 11

- Connect camera and parking sensors and test .
 - Adjust camera so image on screen matches to side camera. Check camera in forward gear to ensure drive guides are correctly positioned.
-

Final Checks & Installation Kit

Ensure Number Plate is Clearly Visible

Note: When fitting/refitting the licence plate to the vehicle, ensure there is no obstruction to licence plate vision in accordance with local authorities. If required relocate licence plate to an alternate location.

Further VFPS Notes

1. Do not attach VFPS to the vehicle using anchorages not intended for this purpose (e.g. engine mounting bolts).
2. Do not use this product for any vehicle make or model, other than those specified by the VFPS manufacturer.
3. Do not remove the plaque or label from the VFPS.
4. Do not modify the structure of the VFPS in any way.
5. No accessory or fitment should project forward of the VFPS forward profile.
6. **Ensure these instructions are left with the vehicle owner and/or operator.**

Important Information

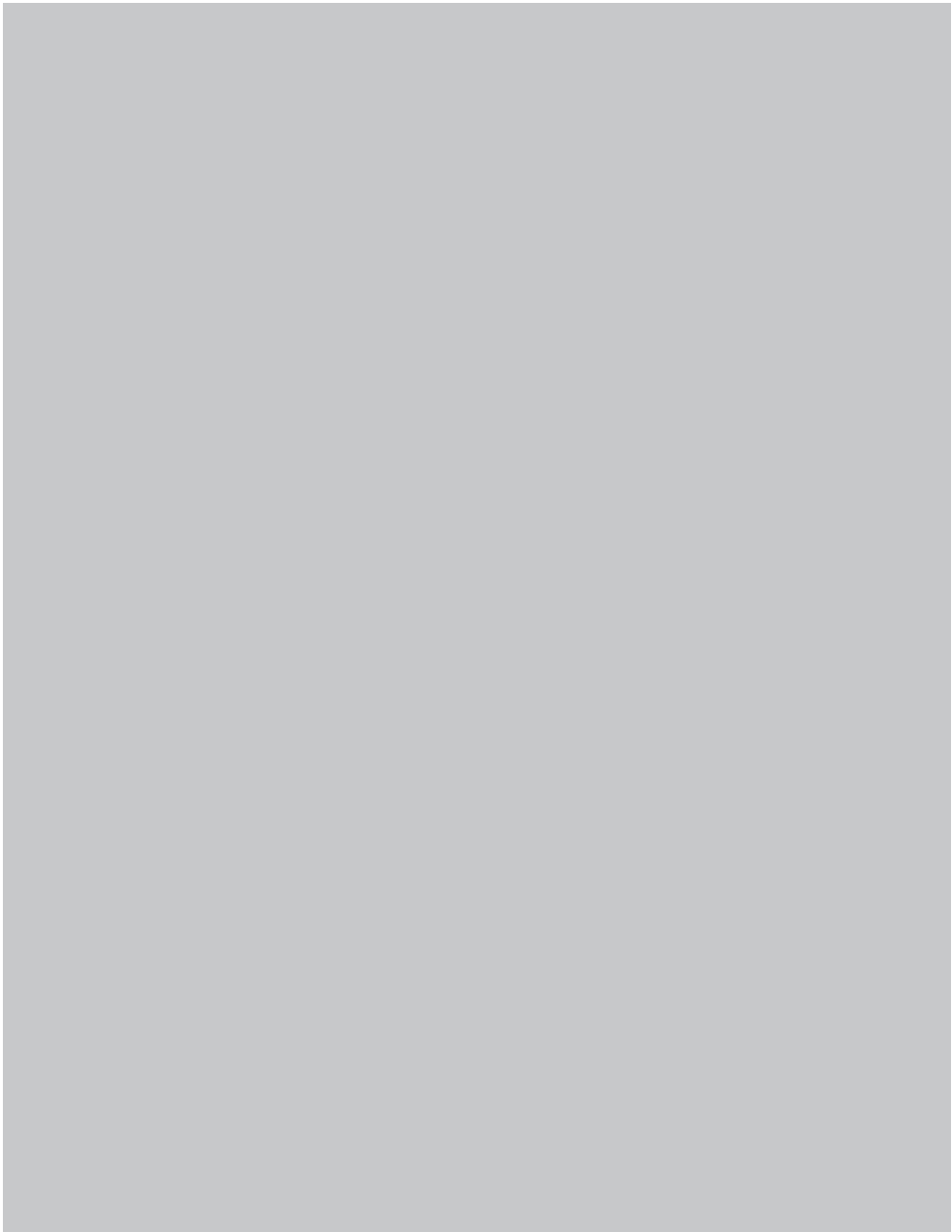
Periodically check bolts and nuts for correct tightness, especially if traveling on rough roads.

Installation Kit

1 - Pair ECB steel mounting brackets (YNBMB61)	8 - M8 spring washers
1 - Camera rear mount (NBMB61_VA2A)	2 - M6 x 16mm bolts
4 - M10 x 1.5 x 40mm bolts	4 - M6 flat washers
8 - M10 flat washers	2 - M6 nyloc nuts
4 - M10 spring washers	6 - 150mm length, single core wire
4 - M10 x 1.5 nuts	12 - Solder joiners
8 - M8 x 1.25 x 30mm bolt	2 - 180mm lengths 10mm convoluted tubing
8 - 5/16 x 1 flat washers	

Finished Product





Warranty Registration

Contact Details

Name: _____

Address: _____

Product: _____

Email: _____

Phone: _____

Work Order Number: _____

You can find this on the silver label
of your ECB product.

By submitting this registration you automatically subscribe to ECB's mail outs.
You can unsubscribe at any time.

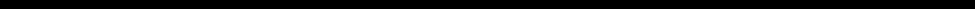
Or Register Online

For online registration please go online to www.ecb.com.au/TBC. If you have any questions please contact our national office on 1800 069 145 or www.ecb.com.au.



PN: NBMB61SY
Please post to PO Box 122,
Margate QLD 4019

Notes



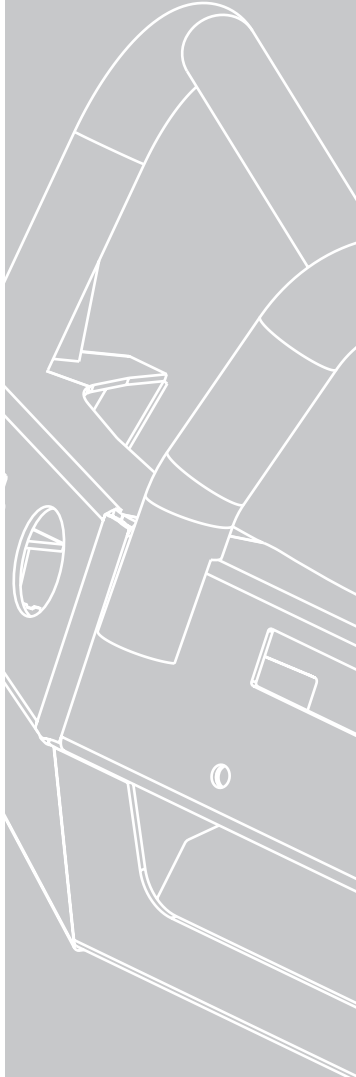
A series of 18 horizontal lines spaced evenly down the page, providing a template for writing notes.

_____ Full Name

_____ Date

REPLACES: 00.00.00

REVISED: 14.01.19



1800 069 145
www.ecb.com.au

Strongest Built Australian Made Lifetime Warranty

29 Snook St, Clontarf QLD 4019
PO Box 122, Margate QLD 4019